



For Lease

**Massive
Shop**



17 39207 RR 271
Red Deer County, Alberta

Wes Giesbrecht
403.350.5674
wes@advantagecommercial.ca
www.advantagecommercial.ca

CENTURY 21
Advantage
905-4747 67 St
Red Deer, AB, T4N 6H3
Office: 403.346.0021



CENTURY 21 ADVANTAGE COMMERCIAL®

Municipal Address:

17-39207 RR 271, Red Deer County, AB

Legal Description:

SW 13-39-27-W4

Size:

16,000 sq ft

Site area:

4.09 acres

Taxes (2019):

\$203,058

Age:

2014

Zoning:

BSI

Available:

30 days

Lease Price:

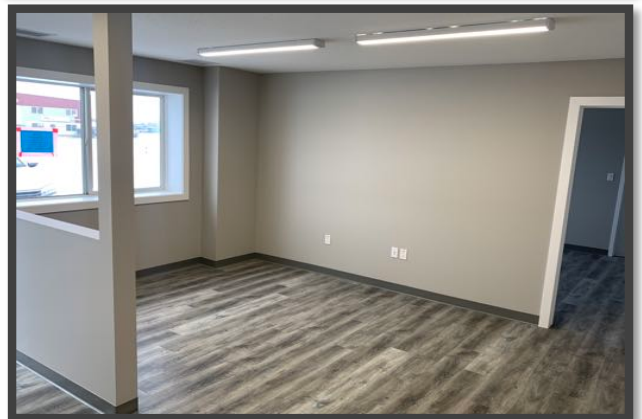
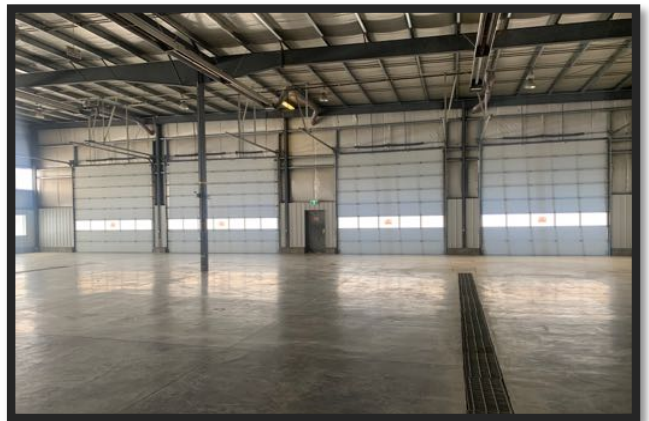
\$8/psf

NNN:

\$3.50/psf

Property details:

- 24' high ceilings
- 4 Aviation style 12'x24' bi fold doors
- 3 14'x18' doors
- 100' drive thru bays
- Shared yard with 2.5 acres of dedicated graveled space
- Radiant heat
- Grade loading



The information contained herein is believed to be true and accurate but does not form part of any future contract. The property is subject to sale, withdrawal or price changes without notice. The information contained herein is based upon the information furnished by the principle and sources which we deem to be reliable but for which we cannot assume responsibility.

CENTURY 21 ADVANTAGE **COMMERCIAL.**

17 39207 RR 271
Red Deer County, Alberta

